

# Public Building Assessor (DEC) Training

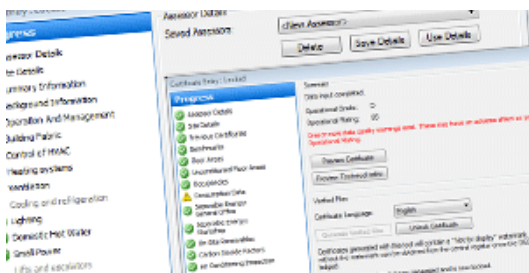
Maintain building assessment standards across the public sector

Stroma Certification's Public Building Assessor (DEC) Training is provided over a two-day course. Its aim is to instruct candidates in the production of Display Energy Certificates (DECs). DECs are required by all public buildings with a usable floor space of more than 250m<sup>2</sup> which are frequented by members of the public.

Complete Stroma Certification's DEC training and join our approved certification scheme as a DEC assessor (authorised by the Department for Communities and Local Government (DCLG)). Our scheme is fully audited to ensure assessment standards are maintained across the industry.

## Course structure

Stroma Certification's Public Building Assessor (DEC) training is approved by the Awarding Body of the Built Environment (ABBE). A registration fee of £230+VAT is payable to ABBE upon course completion. We offer DEC training across the UK and can provide the course at a location of your choosing for groups of four or more individuals.



## OR Toolkit Software

Our DEC Training includes a full demonstration and tutorial on OR Toolkit software, which is provided via our partnership with SystemsLink. Candidates will be shown how to use the software to process DEC data and lodge the Advisory Report.

## 2 day Public Building Assessor (DEC) training

### £975 course fee

£230 ABBE Awarding Body Fee  
*Fees exclude VAT*

#### Day One:

- An introduction to Energy Assessment
- ABBE Diploma qualification structure and requirements
- National Occupation Standards (NOS) Units 1 and 2
- Building Elements and Services

#### Day Two:

- Display Energy Certificate (DEC) background and legislation
- DEC content and methodology
- Introduction to, and explanation of the government's software and the source of the Central Information point (CIP) file
- Workshop covering data entry and production of the certificate Advisory Report (AR)

Email [training@stroma.com](mailto:training@stroma.com) or visit [www.stroma.com/certification](http://www.stroma.com/certification) to book your course

Stroma Certification, 4 Pioneer Way Castleford, WF10 5QU - t.0845 621 11 11

\*Calls cost 7p per minute plus your phone company's network access charge or call 01977 665420.

